

Supports Firefox and Chrome Browsers >

Color-Coded Gauges & Graphs >

Tabular Temperature Data >

Map Views of Sensor Locations >



Temperature Monitoring Solution

Automatic Monitoring, Alerting & Logging

Elpas Temperature Monitoring delivers a cost-effective, automated way to remotely monitor environmentally sensitive assets and environments. This wireless, browser-based solution enables facilities to comply with strict temperature mandates imposed on building areas or items that affect material spoilage or asset malfunction.

Elpas Temperature Monitoring can function as a standalone system, monitoring a few refrigerators or freezers in a single department, while offering the flexibility to grow into a campus-wide solution, able to simultaneously monitor hundreds of refrigerators and building locations.

How Temperature Monitoring Works: Elpas Active RFID (Radio Frequency Identification) Temperature Sensors transmit around-the-clock temperature readings and are mounted in refrigerators, freezers or building environments such as IT closets. Should the temperature deviate from the mandated temperature range, personnel will be alerted to investigate and correct the non-compliant temperature condition.



From Tyco Security Products

Temperature Monitoring Solution Benefits

Facilitates traceability and audit trails

Automatically monitors and logs temperature conditions for compliance

Enhances staff efficiency and productivity

Automates the manual processes and paper practices that most facilities have for monitoring and logging temperature conditions

Improves safety and quality

Ensures that assets are handled and stored per compliance guidelines

Helps reduce spoilage and shrinkage

Reduces spoilage losses resulting from refrigeration malfunctions

Solution Features

Automated Temperature Monitoring

Automates the monitoring of environmentally sensitive assets or building locations that require strict temperature range compliance

Scalable System Capacity

Delivers precise temperature accuracy whether monitoring one refrigerator or an entire campus-wide facility

Temperature Alert Management

Includes real-time interactive screens for managing the life cycle of the received temperature alert

Real-time Facility Maps

Browser based dashboard displays the specific building locations of non-compliant temperature conditions

Enterprise-Class Data Reporting

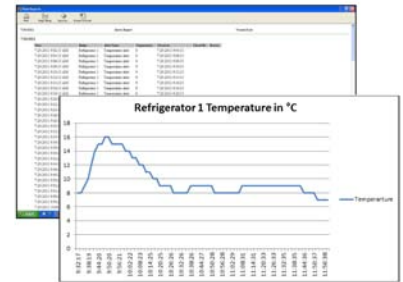
Provides historical and real-time reports (on-demand or scheduled) and exportable to Excel, PDF or HTML

Robust Alert Options

Supports user-definable out of temperature range alerts via, pagers, display panels, SMS messaging, e-mail, public address announcements, pop-up computer screen messages or other external software applications

International Standards

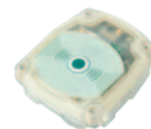
CE, FCC, IC compliant



Easy to Read Reports & Graphs for Regulatory Compliance



External Probe Temperature Sensor
Range: -40°C to 80°C (-40°F to 176°F)



Internal Thermistor Temperature Sensor
Range: -10°C to 70°C (14°F to 158°F)

The trademarks, logos, and service marks displayed on this document are registered in the United States [or other countries]. Any misuse of the trademarks is strictly prohibited and Tyco International Ltd. will aggressively enforce its intellectual property rights to the fullest extent of the law, including pursuit of criminal prosecution wherever necessary. All trademarks not owned by Tyco International Ltd. are the property of their respective owners, and are used with permission or allowed under applicable laws. Product offerings and specifications are subject to change without notice. Actual products may vary from photos. Not all products include all features. Availability varies by region; contact your sales representative. ©2013 Tyco Security Products. All rights reserved. C-800951